


# Chapter 9 Temperature and Humidity Display

## 9.1 Create a new Temperature and Humidity Window

Click on “new window” button  then select “Temperature and Humidity window” as shown in image 9-1 and 9-2 in below.

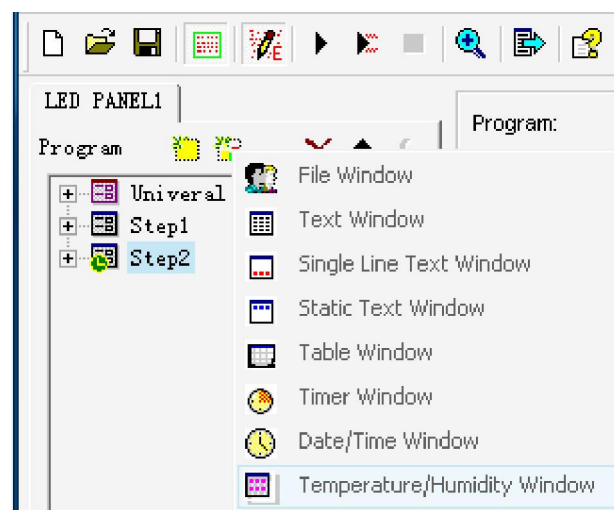


Figure 9-1

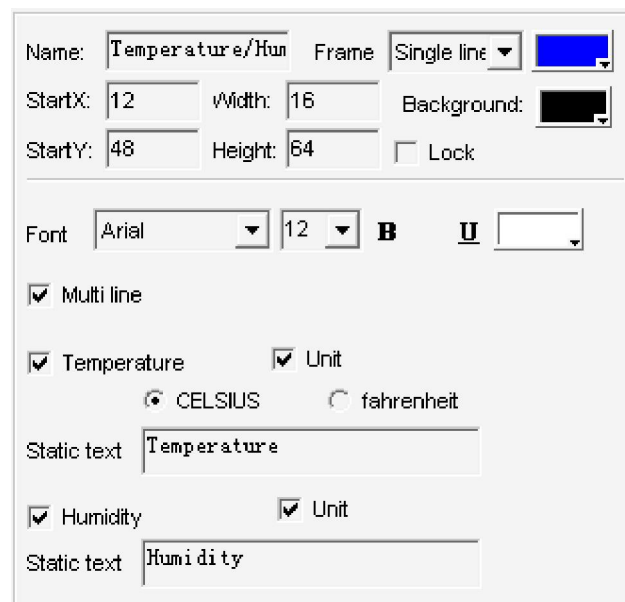
A configuration dialog for the 'Temperature/Humidity Window'. The 'Name' field is 'Temperature/Hun', 'Frame' is 'Single line', and 'Background' is a color picker. Position fields include 'StartX: 12', 'Width: 16', 'StartY: 48', and 'Height: 64'. There is a 'Lock' checkbox. The 'Font' section shows 'Arial', size '12', with 'B' (bold) and 'U' (underline) options. Under 'Multi line', there are two sections: one for 'Temperature' with a 'Unit' dropdown (set to 'CELSIUS') and a 'Static text' field containing 'Temperature'; and another for 'Humidity' with a 'Unit' dropdown and a 'Static text' field containing 'Humidity'.

Figure 9-2

## 9.2 Setup Temperature and Humidity window

As shown in image 9-2, the upper part is for options.

Name: program's name

Frame: setup frame and color

Starting point X: x-coordinate of the starting point

Starting point Y: y-coordinate of the starting point

Width: setup program's width

Height: setup program's height

Background: set up background color

Lock: lock program window to prevent it from moving.

## 9.3 Setup Temperature and Humidity properties

Options for temperature and humidity as shown in image 9-3 in below, which include Static text and font, font size and color; single or multi line display, temperature type and unit, etc.

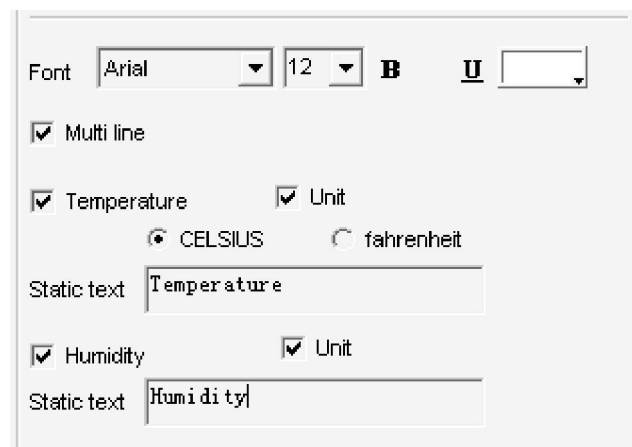


Figure 9-3

Preview effect as shown in image 9-4 in below.

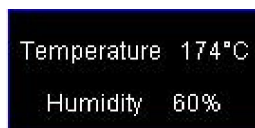


Figure 9-4